

# MONTHLY MEMBERSHIP PROGRESS REPORT

District 9 SW

Results as of: 9/30/2023

GMT:

LOCATION IOWA

GMT CA

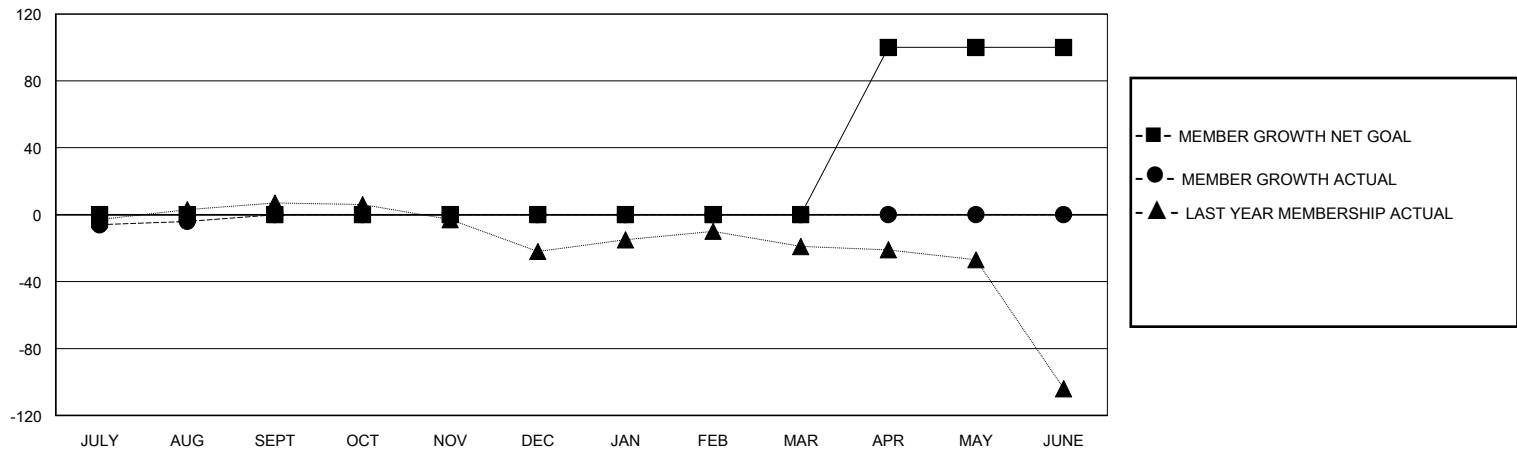
Clubs			
RESULTS FOR 2023-2024			
QUARTER	NEW CLUB GOAL	NEW CLUBS	DROPPED CLUBS
JULY/AUG/SEPT	0	0	1
OCT/NOV/DEC	0	0	0
JAN/FEB/MAR	0	0	0
APR/MAY/JUNE	1	0	0

Members			
RESULTS FOR 2023-2024			
QUARTER	MEMBER GROWTH NET GOAL	MEMBER GROWTH ACTUAL	DROPPED MEMBERS ACTUAL (including transfers)
JULY/AUG/SEPT	0	39	34
OCT/NOV/DEC	0	0	0
JAN/FEB/MAR	0	0	0
APR/MAY/JUNE	100	0	0

GOALS AND ACTUAL NEW CLUBS CUMULATIVE



GOALS AND ACTUAL MEMBERS CUMULATIVE



<b>DROPPED CLUBS: 1</b>	11 CLUBS OF 46 ADDED 1 OR MORE NEW MEMBERS	<b>GENDER DISTRIBUTION</b>	
		MALE 770 (66.15%)	FEMALE 393 (33.76%)
<b>DROPPED MEMBERS</b>		<a href="#">CLICK HERE FOR CUMULATIVE MEMBERSHIP DATA</a>	TOTAL FAMILY UNIT MEMBERS 371
DECEASED 3	CLUB CANCELLED 0		FAMILY MEMBERS PAYING HALF DUES 190
OTHER 31	TOTAL 34		